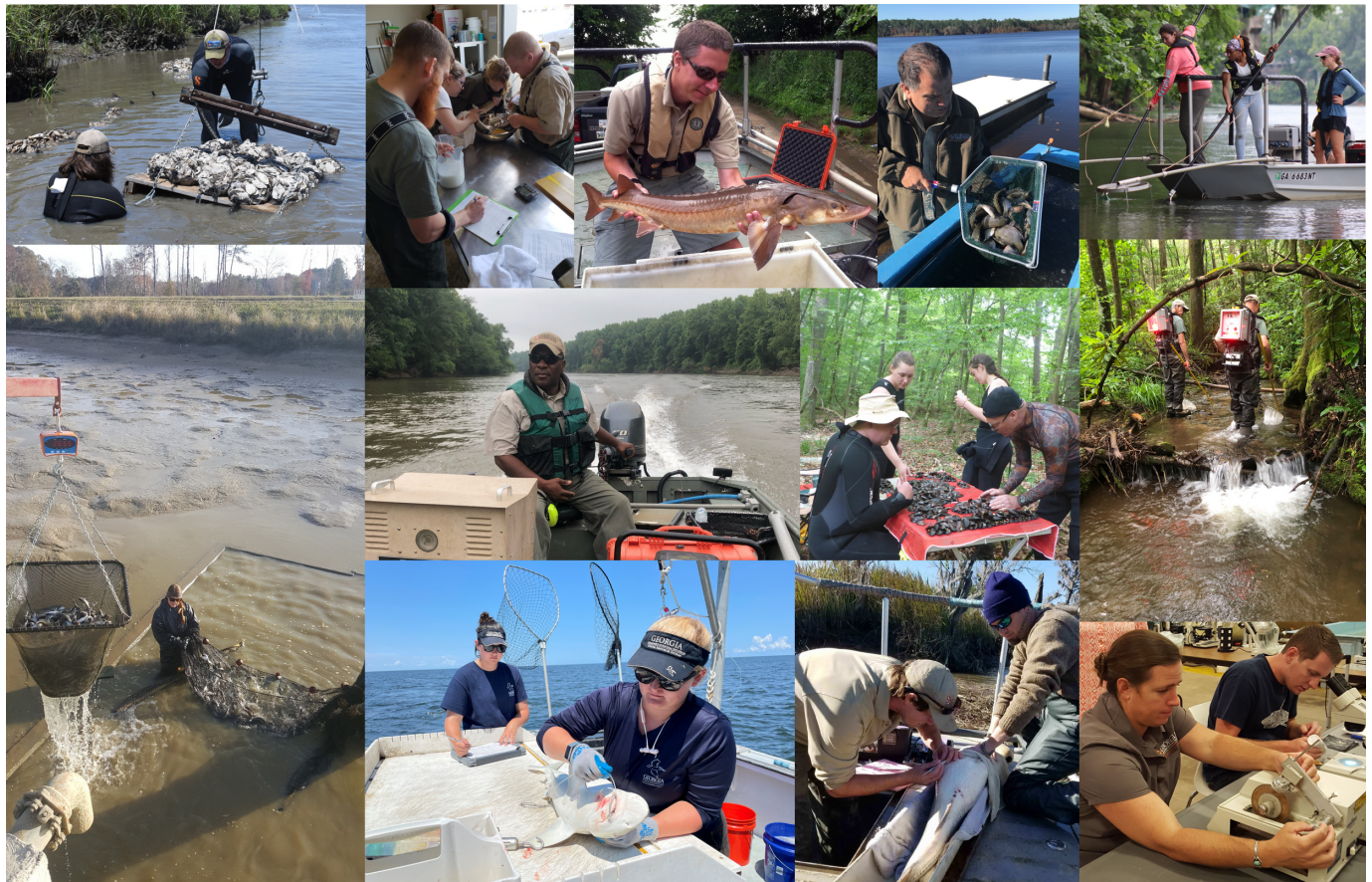


GEORGIA CHAPTER AFS

2022 Annual Meeting

February 1 - 3

*Exchanging Ideas, Removing
Barriers, and Forging
Partnerships for Healthy
Aquatic Ecosystems*



Dedicated to strengthening the fisheries profession, advancing fisheries science, and conserving our fisheries resources



2022 Annual Meeting Schedule at a Glance



Tuesday, February 1

| | |
|-------------|---|
| 1:00 – 1:15 | Opening Remarks – President Robert Bringolf |
| 1:15 – 2:00 | Keynote Address – Susan Shipman |
| 2:00 – 2:15 | Break |
| 2:15 – 3:15 | Session 1: Student Presentations |
| 3:15 – 3:30 | Break |
| 3:30 – 4:30 | Session 1: continued |
| 4:30 – 4:45 | Break |
| 4:45 – 5:30 | Business Meeting |
| 6:00 – 9:00 | Poster Session and Social |

Wednesday, February 2

| | |
|---------------|--|
| 7:45 – 8:30 | Fellowship of Christian Conservationists |
| 9:00 -10:15 | Session 2: Red Drum Management Panel |
| 10:15 – 10:30 | Break |
| 10:30 – 12:00 | Session 2: continued |
| 12:00 – 1:30 | Lunch |
| 1:30 – 2:45 | Session 3: Student Presentations |
| 2:45 – 3:00 | Break |
| 3:00 – 4:00 | Session 3: continued |
| 4:00 – 4:15 | Break |
| 4:15 – 5:15 | Session 4: Professional Presentations |
| 6:00 – 9:30 | Awards Banquet |

Thursday, February 3

| | |
|---------------|---|
| 8:30 -9:30 | Session 4: continued |
| 9:30 - 9:45 | Break |
| 9:45 – 11:00 | Session 4: continued |
| 11:00 – 11:15 | Break |
| 11:15 – 12:00 | Student Awards, Door Prizes, Meeting Closeout |



2022 Georgia Chapter AFS Annual Meeting



Welcome to the 2022 Annual Meeting of the Georgia Chapter of the American Fisheries Society!

Together again! As successful and enjoyable as the virtual meeting was last year, we're excited and thankful to be able to meet in person this year, especially at such a beautiful venue. We hope to use this meeting as an opportunity to connect or reconnect with colleagues and showcase some of the excellent work going on around our state. The theme of our meeting is *Exchanging Ideas, Removing Barriers, and Forging Partnerships for Healthy Aquatic Ecosystems*. Our richly diverse aquatic resources set our state apart, but it's the hard work and dedication of people committed to advancing aquatic science, education, and communication that really stand out. This commitment is also evident in the overall level of engagement of our membership, which was formally recognized this year with our first-ever 'Outstanding Small Chapter Award' from the parent society. Many of those who contributed to the award also helped make this meeting possible; it simply would not have been possible without the efforts of chapter officers, committee chairs and members, and other volunteers, as well as the generosity of our financial sponsors. So, enjoy the meeting, buy a raffle ticket to support the students, have a wonderful time reconnecting with colleagues or connecting with new ones, and be inspired by the chapter's collective efforts to strengthen healthy aquatic ecosystems.

Here's to tight lines in 2022!

Robert

Thank you for your Support!

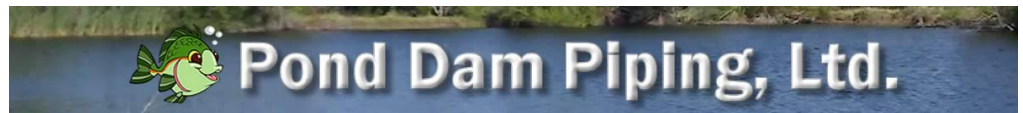
GAAFS 2022 Sponsors



Georgia Power

The University of Georgia

WARNELL 
SCHOOL OF FORESTRY & NATURAL RESOURCES

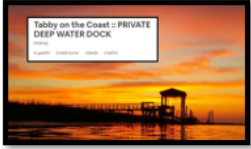


Marine Extension and
Georgia Sea Grant
UNIVERSITY OF GEORGIA



Thank you for your Support!

GAAFS 2022 Fundraising Donors





2022 Annual Meeting Special Events



Keynote Speaker

Susan Shipman

The Path to Healthy Aquatic Ecosystems

Susan worked for the Georgia Department of Natural Resources, Coastal Resources Division, for 30 years, including serving as the Chief of Marine Fisheries and Division Director. She directed Georgia's Coastal Management Program, habitat protection, permitting, and marine fisheries management. She was the State agency appointee to the South Atlantic Fishery Management Council and the Atlantic States Marine Fisheries Commission. Now retired, Susan spends the majority of her time as a hobbyist beekeeper and community volunteer. She Chairs the Stewardship Committee for the Land Trust as well as the Cannon's



Point Preserve Advisory Committee and Conservation Task Force. Susan is an advisor to Georgia SeaGrant, represents apiarists on the Glynn County Farm Bureau Board, serves on the One Hundred Miles Board, and several other community boards and foundations.



Meals prepared by Silk Road Catering

Tuesday Night Poster Social

6:00 - 9:00 pm

Chicken Wings
Vegetable Tray with Scratch-made Black
Peppercorn Ranch
Pulled Pork on a Yeast Role with "The Sauce"

*Student poster judging will take
place from 8:00 to 9:00 pm.*

Wednesday Night Awards Banquet

6:00 - 9:30 pm

Low country Boil served with Scratch-made
Cocktail Sauce
Grilled Jerk Chicken
Green Beans
Salad of Mixed Greens tossed with Buttermilk
Ranch Dressing
French-Bread with Herbed Butter

Tuesday, February 1, 2022

| | | |
|--------------|---|------------------|
| 10:00 – 4:00 | Registration | |
| 1:00 – 1:15 | Welcome/Opening Comments | Robert Bringolf |
| 1:15 – 2:00 | Keynote Address | Susan Shipman |
| 2:00 – 2:15 | BREAK | |
| 2:15 – 4:30 | Session 1: Student Presentations | |
| 2:15 – 2:30 | Vertical distribution of the mesopelagic community and individuals near Cape Hatteras, North Carolina, USA | N. Carmela Stock |
| 2:30 – 2:45 | Quantifying the development and nekton use of oyster reef habitat restored using traditional and alternative substrates | Cameron Atkinson |
| 2:45 – 3:00 | The effect terrapin excluder devices have on blue crab catch in Georgia waters | Kristafer Howard |
| 3:00 – 3:15 | Boundary Issues: Contaminants in prey fish and consumption advisories near a superfund site in Brunswick, Georgia | Talia Levine |
| 3:15 – 3:30 | BREAK | |
| 3:30 – 3:45 | Monitoring the potential dispersal and establishment of a nonnative Northern Snakehead population in the Yellow River Watershed, GA | Jasmine Longmire |
| 3:45 -4:00 | Novel methods for assessing hydrilla spread in Lake Sinclair, Georgia | Jackson Glomb |
| 4:00 - 4:15 | Dirty Loaches: An update on the Georgia Oriental Weatherfish invasion | Wesley Gerrin |
| 4:15 – 4:30 | Fitness of interspecific hybrids in the genus Cyprinella: An evaluation of swimming performance in stream fishes | Jessica Wilks |
| 4:30 – 4:45 | BREAK | |
| 4:45 – 5:30 | BUSINESS MEETING | |
| 6:00 – 9:00 | POSTER SESSION AND SOCIAL | |

AFS and GAAFS are committed to providing a safe, productive, and welcoming environment for all meeting participants.

We ask all participants to read the AFS Meetings Code of Conduct on our website

Tuesday Night Poster Social

| Poster Session 8:00 – 9:00 | | |
|---|--|----------------|
| --Student-- | | |
| Changes in density of two imperiled darter species in response to a stream restoration: a preliminary analysis | | Neely Carroll |
| Community comparison of juvenile fish species in Sapelo and Doboy Sounds: How abundance and size distribution differ | | Britney Hall |
| Assessing fisher risk to PAH exposure near public boat ramps and piers in Chatham County, GA | | Ryan Jinks |
| Recruitment and abundance of larval and juvenile Bay Whiff <i>Citharichthys spilopterus</i> in Wylly Creek near Savannah, GA | | Eric Parks |
| Estimating age at first reproduction for a previously injured common bottlenose dolphin (<i>Tursiops truncatus</i>) near Savannah, Georgia | | Ashley Rivera |
| Water Quality Analysis of Georgia Fish Hatcheries and Stocking Locations | | Alane Rogers |
| Reproductive biology of Redbreast Sunfish in an urban watershed | | Hannah Talbert |
| Microplastic characteristics, distribution, and abundances in the Savannah River, GA, U.S.A. | | Lady Volmar |
| Age and Growth of Alabama Bass and Alabama Bass Hybrids in Tributaries of the Black Warrior River, Alabama | | Amber Young |
| --Professional-- | | |
| Where have all the Snakehead gone? Two years of monitoring of a wild population of Northern Snakehead <i>Channa argus</i> in Gwinnett County, Georgia | | Hunter Roop |

Wednesday, February 2, 2022

| 7:45 – 8:30 Fellowship of Christian Conservationists Meeting | | |
|--|--|------------------|
| 8:30 – 5:00 | Registration | |
| 9:00 – 12:00 | Session 2: A Case Study in Interstate Fisheries Management: South Atlantic Red Drum (Symposia) | |
| 9:00 – 9:15 | Back from the brink – a history of Red Drum management in Georgia | Spud Woodward |
| 9:15 – 9:30 | Georgia Department of Natural Resources: marine recreational data for Red Drum | Dawn Franco |
| 9:30 – 9:45 | The Marine Sportfish Population Health Survey: monitoring recruitment of Red Drum in Georgia | Ryan Harrell |
| 9:45 – 10:00 | 15 Years of Georgia's Coastal Longline Survey | Donna McDowell |
| 10:00 – 10:15 | Georgia's Red Drum acoustic tagging project | Chris Kalinowsky |
| 10:15 – 10:30 | BREAK | |

| Wednesday, February 2, 2022 | | |
|-----------------------------|--|-------------------|
| 10:30 – 10:45 | Fishing through Georgia's Red Drum survey data | Jared Flowers |
| 10:45 – 11:00 | Public participation in Georgia saltwater fisheries management | Kathy Knowlton |
| 11:00 – 11:15 | Fish don't adhere to political boundaries: Approaches to interstate management | Doug Haymans |
| 11:15 – 11:30 | Redfish management in Florida | Erika Burgess |
| 11:30 – 11:45 | Red Drum: Science and management in South Carolina | Joey Ballenger |
| 11:45 – 12:00 | PANEL QUESTIONS | |
| 12:00 – 1:30 | LUNCH | |
| 1:30 – 4:00 | Session 3: Student Presentations | |
| 1:30 – 1:45 | Flow regime and recruitment in Gulf Sturgeon in the Apalachicola River | Mark D'Ercole |
| 1:45 – 2:00 | Modeling water quality influence on juvenile Atlantic Sturgeon aggregation in the Altamaha River Estuary, Georgia | Maxwell Kleinhans |
| 2:00 – 2:15 | Distribution and habitat associations of Warrior Bass <i>Micropterus warriorensis</i> in the Black Warrior Watershed, Alabama | Amber Young |
| 2:15 – 2:30 | Suwannee Bass movement, life history, and angler exploitation in Georgia | Joel Yeager |
| 2:30 – 2:45 | Relative abundance of Largemouth Bass (<i>Micropterus salmoides</i>) in Georgia reservoirs with low or high catches of Spotted Bass (<i>Micropterus punctulatus</i>) | Jacob Daley |
| 2:45 – 3:00 | BREAK | |
| 3:00 – 4:00 | Session 3: Continued | |
| 3:00 – 3:15 | The Missing link: Using genetic barcoding to connect mussel-host relationships in the Lower Flint River, GA | Hayley Robinson |
| 3:15 – 3:30 | Fish kill loss valuation and angler effort estimation on three mid-size Alabama rivers | Phillip Carson |
| 3:30 – 3:45 | Ingestion of Nylon Fibers by Larval Freshwater Dipteran, <i>Chironomus riparius</i> | Taylor Ransome |
| 3:45 – 4:00 | Effects of environmental factors on spatial distribution of Longnose Gar (<i>Lepisosteus osseus</i>) in the Altamaha River | Alaina Davis |
| 4:00 – 4:15 | BREAK | |
| 4:15 – 5:15 | Session 4: Professional Presentations | |
| 4:15 – 4:30 | A next gen seafood industry: Framing a career-development program for those earning a living off the water | Bryan Fluech |
| 4:30 – 4:45 | Federal reporting in the digital age: Modernizing and streamlining reporting systems | Dylan Severens |
| 4:45 – 5:00 | Gateway to Fishing Program | Michael Sellers |
| 5:00 -5:15 | A proposed publicly available known-age fish structure repository | Marty Hamel |
| 6:00 – 9:30 | AWARDS BANQUET AND ANNUAL RAFFLE | |

Thursday, February 3, 2022

| | | |
|---------------|---|---------------|
| 8:30 – 11:00 | Session 4: Professional Talks - continued | |
| 8:30 – 8:45 | Distribution and habitat associations of Cahaba Bass <i>Micropterus cahabae</i> in the Cahaba River Watershed, Alabama | Daniel Bryant |
| 8:45 – 9:00 | Chattahoochee Bass distribution, genetic integrity, and habitat associations in the Chattahoochee River basin | Chad Kaiser |
| 9:00 – 9:15 | Influence of water temperature on the physiological performance of striped bass (<i>Morone saxatilis</i>) | Johanne Lewis |
| 9:15 – 9:30 | Comparison of stocking protocols on striped bass handling stress | Janet Genz |
| 9:30 – 9:45 | BREAK | |
| 9:45 – 10:00 | DEFCON 1 – The clear and present danger of Alabama Bass to Black Bass fisheries in the U.S. | Steve Sammons |
| 10:00 – 10:15 | Documentation, control, and management of Whirling Disease in Georgia | Sarah Baker |
| 10:15 – 10:30 | Did you see that Moccasin(shell)? Assessing the status and reintroduction potential for the Coosa Moccasinshell (<i>Medionidus parvulus</i>) in Georgia, Alabama, and Tennessee | Ani Escobar |
| 10:30 – 10:45 | Investigating freshwater mussel distributions in the Altamaha River Basin in support of a Candidate Conservation Agreement (CCA) | Matt Rowe |
| 10:45 – 11:00 | The Crayfish Creek stream restoration project – building capacity for fisheries conservation | Jay Shelton |
| 11:00 – 11:15 | BREAK | |
| 11:15 – 12:00 | STUDENT AWARDS, DOOR PRIZES, CLOSING COMMENTS | |
| ADJOURN | | |



Don't forget to check out the latest issue of the Chapter newsletter

The website, our Facebook page, and the newsletter are your best sources to learn about our upcoming events and training workshops

Thank you for your support!